

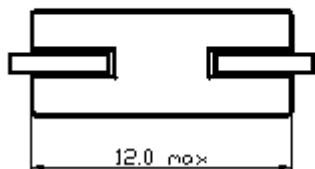
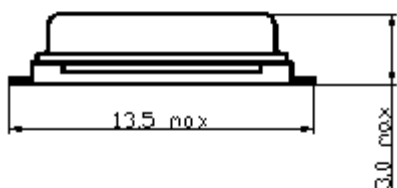
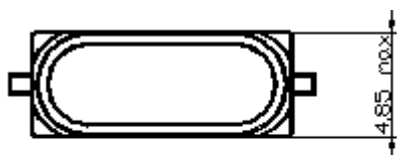


Standard Specifications

FREQUENCY RANGE	8.000~70.000
Mode of Vibration	8.000~30.000MHz Fundamental 27.000~70.000MHz 3 rd Overtone
Drive Level	0.1 TYPICAL
Load Capacitance	8.0Pf MIN
Frequency Tolerance	± 10 、 ± 30 、 ± 50 (at 25 °C)
Shunt Capacitance	7 MAX
Operating Temperature Range	0 °C ~+70 °C Standard
Frequency Stability	± 30 ppm Standard
Storage Temperature Range	-40 °C ~+85 °C
Aging (First Year)	± 5 ppm(at 25 °C)

Equivalent Series Resistance

FREQUENCY RANGE (MHZ)	ESR MAX (Ω)	FREQUENCY RANGE (MHZ)	ESR MAX (Ω)
8.000~8.999	80	20.000~30.999	30
9.000~12.999	60	27.000~70.000	100
13.000~19.999	40		



All Dimensions in mm

CHINA NATIONAL SCIENTIFIC INSTRUMENTS & MATERILAS. CORP

Salse Office: Suite L, 7F, Mansion No 1, GUO DU Development Building, No.182 Chaohui Road, 310014 Hangzhou P.R.China

TEL: 0086-571-85803723 85803731 85803732

FAX: 0086-571-85803724

E-mail: sales@csimc-freqcontrol.com thwu@mail.hz.zj.cn