



# ***SAW Components***

## ***Data Sheet***

### ***CQTSF829M00.01***

Customer's Approval Certificate	
Complies with Directive 2002/95/EC (RoHS)	
Please return this Page Via email as a certification of Your approval	
Checked & Approval by:	Date:

**Hangzhou Freq-control Electronics Technology Co.,Ltd.**

**TEL:0086-571-85803723**

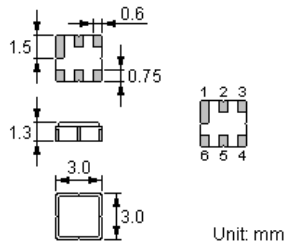
**FAX:0086-571-85803724**

[sales@csimc-freqcontrol.com](mailto:sales@csimc-freqcontrol.com)

**SAW Filter Preliminary : 829 MHz SAW/ Pass band : 6 MHz**

**Package Dimensions DCC6C**

Ceramic Package:



**Pin Configuration**

2	Input
5	Output
1, 3, 4, 6	Ground

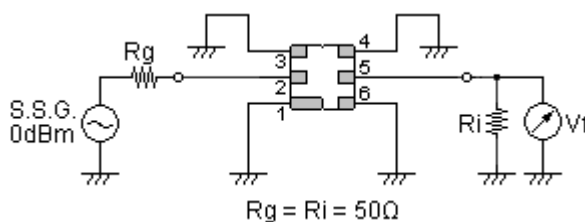
**Maximum Ratings**

Rating	Value	Unit
Input Power Level	$P$	15 dBm
DC Voltage	$V_{DC}$	12 V
Operating Temperature Range	$T_A$	-10 ~ +60 °C
Storage Temperature Range	$T_{sta}$	-40 ~ +85 °C
ESD Voltage (HB)	$V_{ESD}$	150 V

**Electrical Characteristics**

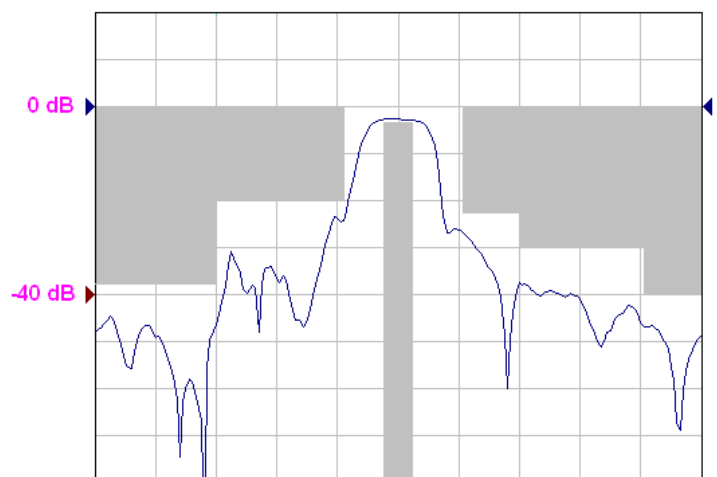
Characteristic	Min.	Typ.	Max.	Unit
Center Frequency	$f_c$	829	—	MHz
Insertion-loss @826-832MHz	$I_L$	2.7	3.2	dB
Pass band Ripple @ 826-832MHz	$P_r$	0.5	1.2	dB
Rejection	DC—650MHz	50	60	dB
	650—710MHz	40	50	
	710—800MHz	37	43	
	<b>800—821MHz</b>	<b>20</b>	<b>22</b>	
	<b>840—850MHz</b>	<b>20</b>	<b>25</b>	
	850—870MHz	30	37	
	870—1000MHz	40	45	
VSWR @ 826-832MHz		1.4	2.0	

**Test Circuit**



**Preliminary S21**

S21 Reference 0dB 10dB/div



Center: 829 MHz

Span: 100 MHz