



SAW Components
Data Sheet
CQTSF466M00.00

Customer's Approval Certificate	
Complies with Directive 2002/95/EC (RoHS)	
Please return this Page Via email as a certification of Your approval	
Checked & Approval by:	Date:

Hangzhou Freq-control Electronics Technology Co.,Ltd.

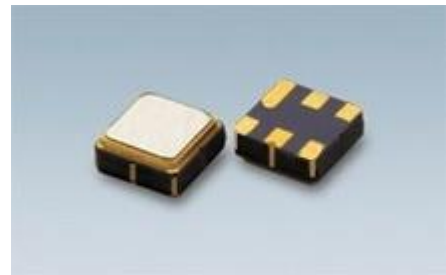
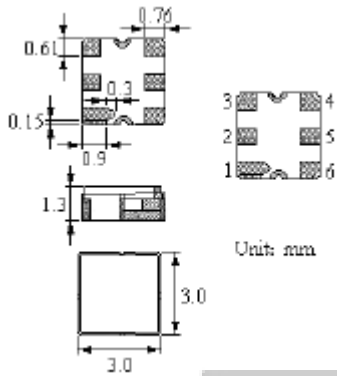
TEL:0086-571-85803723

FAX:0086-571-85803724

sales@@csimc-freqcontrol.com

1. Package Dimension

Ceramic Package: **DCC6C**



Pin Configuration

2	Input
5	Output
1, 3, 4, 6	Ground

2. Marking

DSF*
.3144

- (1) Laser Marking
- (2) D: Manufacture's logo
- (3) SF: SAW Filter
- (4) 3144: Part Number
- (5) : Pin 1 Identifier
- (6) *: Lot number (The code shown below varies in a 4-year cycle)

CHINA QUARTZ TECHNOLOGY

Code	1	2	3	4	5	6	7	8	9	10	11	12
2011	a	b	c	d	e	f	g	h	i	j	k	m
2012	n	p	q	r	s	t	u	v	w	x	y	z
2013	A	B	C	D	E	F	G	H	J	K	L	M
2014	N	P	Q	R	S	T	U	V	W	X	Y	Z

RoHS Compliant
Lead free

3. Performance

3.1 Maximum Rating

Rating		Value	Unit
Input Power Level	P	15	dBm
DC Voltage	V_{DC}	12	V
Operating Temperature Range	T_A	-40 ~ +85	°C
Storage Temperature Range	T_{stg}	-40 ~ +85	°C
ESD Voltage (HB)	V_{ESD}	150	V

3.2 Electronic Characteristics

Parameter	Unit	Minimum	Typical	Maximum
Center frequency	MHz		466	
Insertion Loss @ 465.0~467.0MHz	dB		1.4	2.0
Pass band Ripple @465.0~467.0MHz	dB		0.4	1.0
VSWR@465.0~467.0MHz	dB		1.3	2.0
Rejection	DC~435MHz	dB	50	63
	435~455MHz	dB	45	52
	455~459MHz	dB	25	30
	477~492MHz	dB	25	30
	492~1000MHz	dB	45	55
	1000~3000MHz	dB	35	40
Input/Output Impedance	ohm		50	

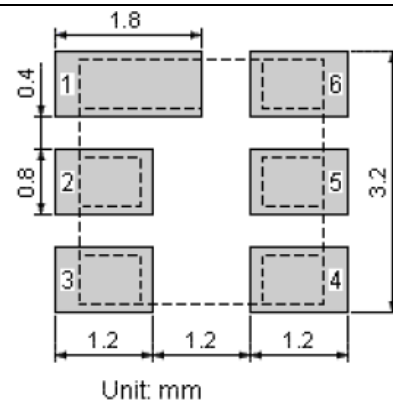
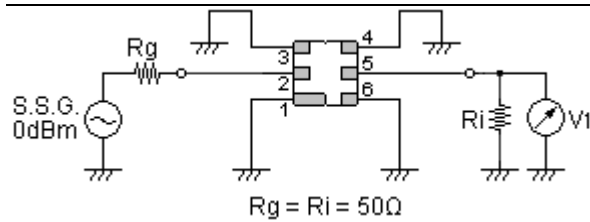
 RoHS Compliant

 Electrostatic Sensitive Device

CHINA QUARTZ TECHNOLOGY

3.3 Test Circuit

Recommended Land Pattern



3.4 Frequency Characteristics

Preliminary Curve

