



***SAW Components***  
***Data Sheet***  
***CQTSF1220M00.00***

Customer's Approval Certificate	
Complies with Directive 2002/95/EC (RoHS)	
Please return this Page Via email as a certification of Your approval	
Checked & Approval by:	Date:

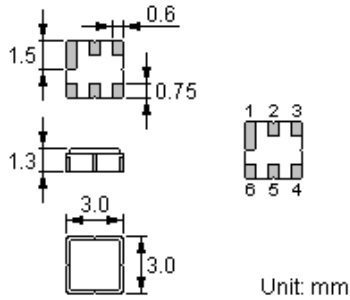
**Hangzhou Freq-control Electronics Technology Co.,Ltd.**

**TEL:0086-571-85803723**

**FAX:0086-571-85803724**

[sales@csimc-freqcontrol.com](mailto:sales@csimc-freqcontrol.com)

### 1. Package Dimension (3.0x3.0) Unit: mm



Pin No.	Function
Pin 2	Input
Pin 5	Output
1,3,4,6	Ground

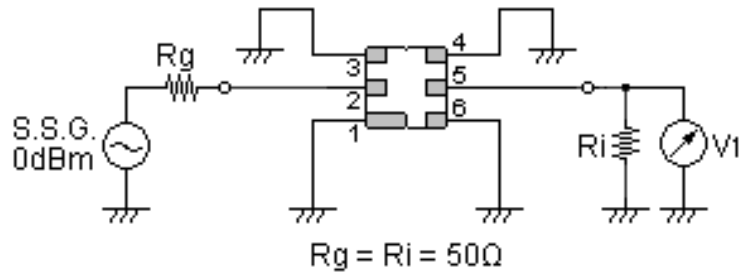
### Maximum Ratings

Rating		Value	Unit
Input Power Level	$P$	15	dBm
DC Voltage	$V_{DC}$	12	V
Operating Temperature Range	$T_A$	-40 ~ +85	℃
Storage Temperature Range	$T_{stg}$	-45 ~ +85	℃
ESD Voltage (HB)	$V_{ESD}$	150	V

### Electrical Characteristics

Characteristic		Min.	Typ.	Max.	Unit
Center Frequency	$f_c$	—	1220	—	MHz
Insertion-loss @1220MHz	$IL$	—	1.8	2.2	dB
Pass band Ripple @ 1200-1240MHz	$Pr$		0.7	1.5	dB
Insertion-loss@1215-1225MHz	$IL$		2.2	2.7	dB
30 dB Bandwidth	$B_{30dB}$		79	85	MHz
Rejection	DC—1160MHz	40	45		dB
	1300—1500MHz	40	45		
VSWR @ 1200-1240MHz			1.5	2.0	

**Test Circuit**



**Preliminary S21**

