



SAW Components

Data Sheet

CQTSF921M42.00

Customer's Approval Certificate	
Complies with Directive 2002/95/EC (RoHS)	
Please return this Page Via email as a certification of Your approval	
Checked & Approval by:	Date:

Hangzhou Freq-control Electronics Technology Co.,Ltd.

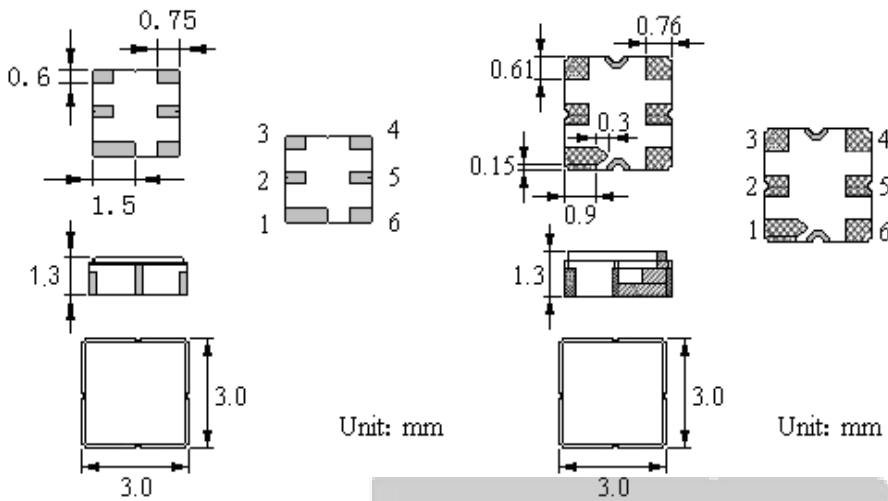
TEL:0086-571-85803723

FAX:0086-571-85803724

sales@csimc-freqcontrol.com

1. Package Dimension (3.0x3.0) Unit: mm

Ceramic Package: **DCC6C**



Pin Configuration

2	Input
5	Output
1, 3, 4, 6	Ground

2 . Marking

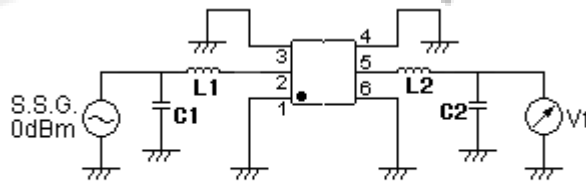


Top View, Laser Marking

- "ND": Manufacturer's mark
- "XXXX": Part number
- "*": Lot number (The code shown below varies in a 4-year cycle)
- "F": SAW filter
- "•": Terminal 1

Code	1	2	3	4	5	6	7	8	9	10	11	12
2015	a	b	c	d	e	f	g	h	i	j	k	m
2016	n	p	q	r	s	t	u	v	w	x	y	z
2017	A	B	C	D	E	F	G	H	J	K	L	M
2018	N	P	Q	R	S	T	U	V	W	X	Y	Z

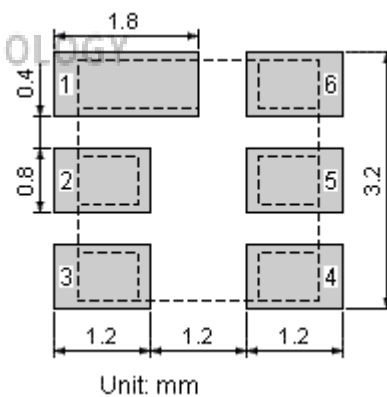
3 . Test Circuit



L1=L2= TBD C1=C2= TBD

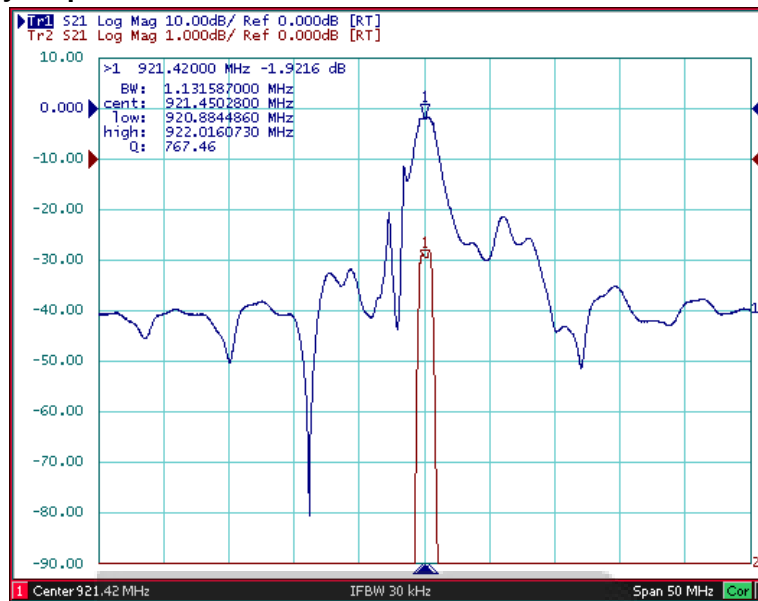
L1=L2=12-15NH,C1=C2=3.6-3.9pF

4.Recommended Land Pattern



Unit: mm

5. Typical Frequency Response



6. Performance

6-1. Electronic Characteristics

Characteristic	Minimum	Typical	Maximum	Unit
Center Frequency	f_c	921.42		MHz
Insertion Loss	--	2.8	3.6	dB
Pass band Ripple	921.27~921.57MHz	0.5	1	dB
Absolute Attenuation				dB
10~800MHz	45	55		
800~887MHz	40	45		
887~896MHz	35	44		
896~919MHz	21	27		
919-924MHz		21		
924~928MHz	12	17		
928~940MHz	20	25	--	
940~950MHz	36	42	--	
950~1000 MHz	42	47		

CAUTION: Electrostatic Sensitive Device. Observe precautions for handling!

6-2. Maximum Ratings

Rating	Value	Unit
Input Power Level	P_{in}	10 dBm
DC Voltage	V_{DC}	6 V
Storage Temperature Range	T_{stg}	-40 to +125 °C
Operable Temperature Range	T_A	-40 to +125 °C