



SAW Components

Data Sheet

CQTSF433M92.01

Customer's Approval Certificate	
Complies with Directive 2002/95/EC (RoHS)	
Please return this Page Via email as a certification of Your approval	
Checked & Approval by:	Date:

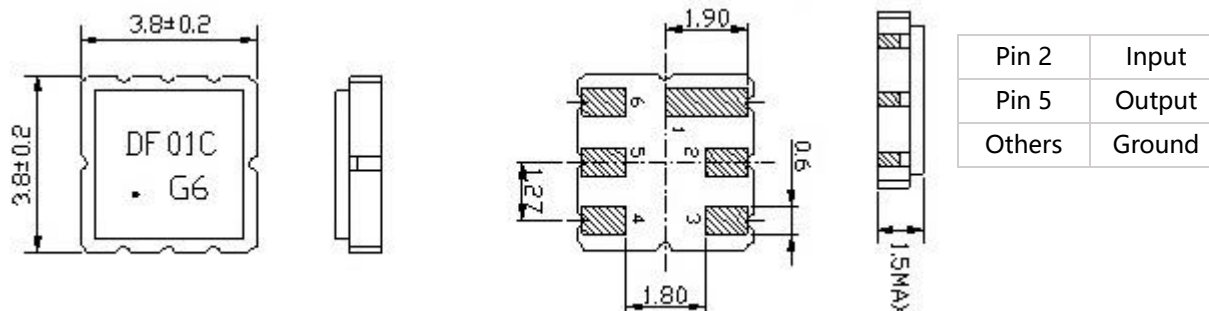
Hangzhou Freq-control Electronics Technology Co.,Ltd.

TEL:0086-571-85803723

FAX:0086-571-85803724

sales@csimc-freqcontrol.com

1. Package Dimension S31(3.8x3.8)



2. Performance

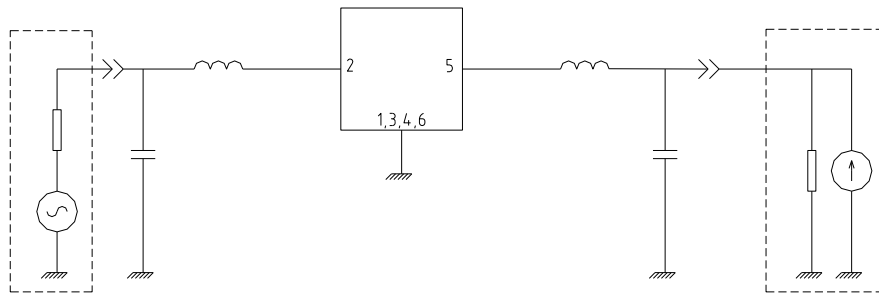
2.1 Maximum Rating

Item	Value
Operation Temperature Range	-40°C to +85°C
Storage Temperature Range	-45°C to +85°C
DC Permissive Voltage	10V DC max.
Maximum Input Power	10 dBm

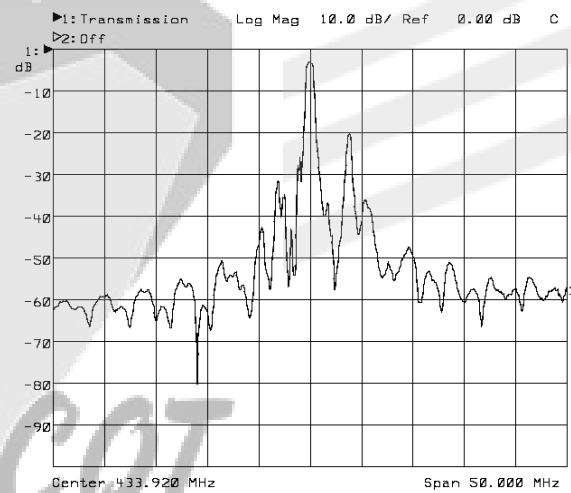
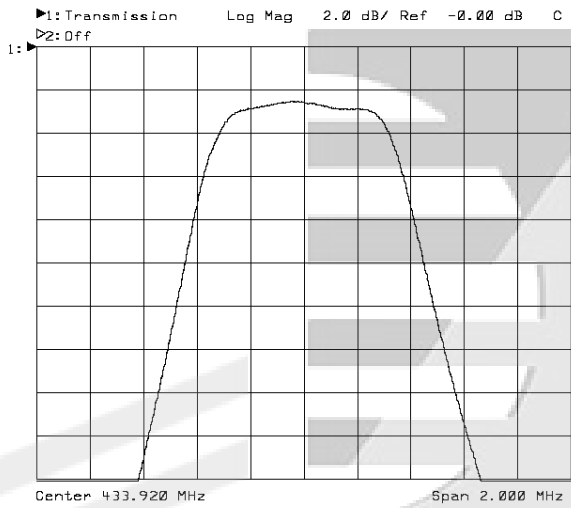
2.2 Electronic Characteristics

Item	Frequency (MHz)	Specification
Center Frequency (fo)	433.92	
Insertion Loss	433.80 ~ 434.12	4.5dB Max.
Passband Ripple	433.76 ~ 434.16	2.0dB Max.
Stop Band Attenuation	10.00~ 414.00	42 dB Min.
	414.00 ~ 428.00	38 dB Min.
	428.00~ 432.92	15 dB Min.
	434.92~ 442.00	10 dB Min.
	442.00 ~ 550.00	35 dB Min.
	550.00 ~ 1000.00	42 dB Min.
Temperature Coefficient of		-0.03 ppm/K ²
External Impedance Match		
Series Inductance L		33 nH
Shunt Capacitance C		5.6 pF

3. Test Circuit



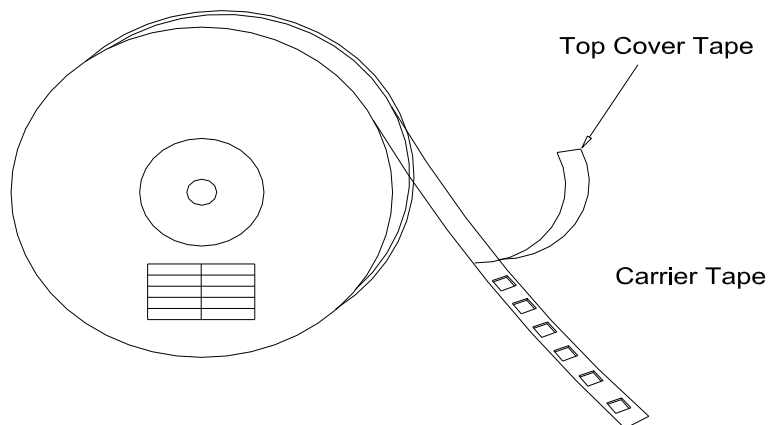
4. Frequency Characteristics



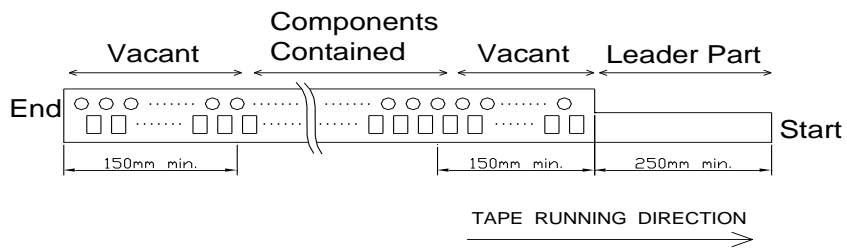
5. Packing Information

Reel specifications:

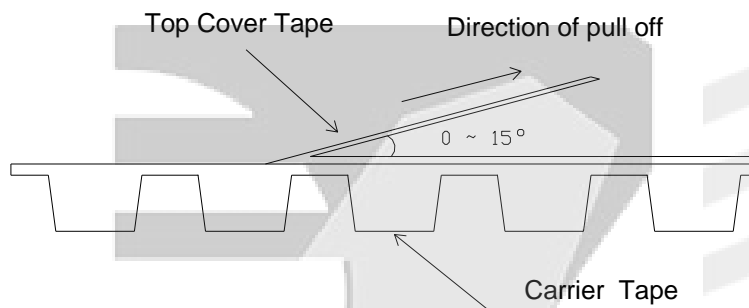
- (1) The tape shall be wound around the reel in the direction shown below.



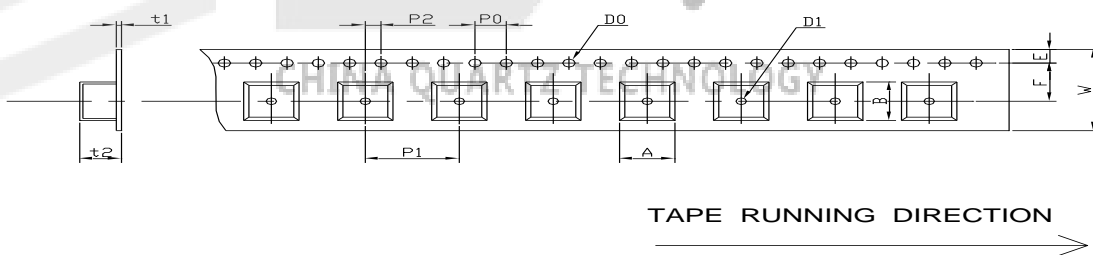
2) Leader part and vacant position specifications.



6. Tape Specifications



[Figure 1] Carrier Tape Dimensions



[Unit: mm]

W	F	E	P0	P1	P2	D0	D1	t1	t2	A	B
12.0	5.5	1.75	4.0	8.0	2.0	Φ 1.5	Φ 1.5	0.31	1.95	4.1	4.1
±0.3	±0.1	±0.1	±0.2	±0.1	±0.2	±0.1	±0.25	max.	max.	max.	max.