



# ***SAW Components***

## ***Data Sheet***

### ***CQTSF403M55.02***

Customer's Approval Certificate	
<b>Complies with Directive 2002/95/EC (RoHS)</b>	
Please return this Page Via email as a certification of Your approval	
Checked & Approval by:	Date:

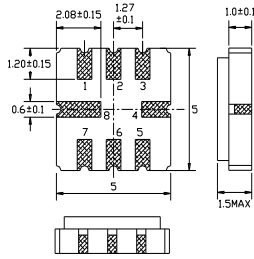
**Hangzhou Freq-control Electronics Technology Co.,Ltd.**

**TEL:0086-571-85803723**

**FAX:0086-571-85803724**

[sales@csimc-freqcontrol.com](mailto:sales@csimc-freqcontrol.com)

**1. Package Dimension Unit: mm**

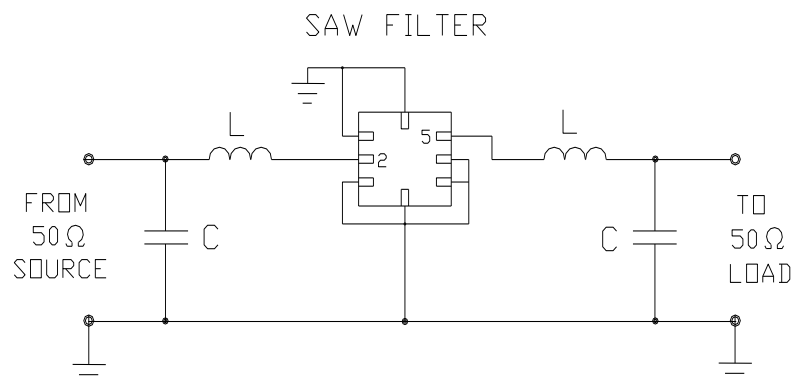


Pin No.	Function
2.	Input
5.	Output
4,8	Case Ground
Other	Ground

**2. Electronic Characteristics**

Electrostatic Sensitive Device (ESD)

Item	Units	Minimum	Typical	Maximum
Center Frequency (fo)	MHz	—	403.55	—
Insertion Loss (ILmax) 403.43MHz ~ 403.67MHz	dB	—	3.0	5.0
Passband Ripple 403.43MHz ~ 403.67MHz	dB	—	1.0	2.0
Relative Attenuation (relative to ILmin)				
10.00MHz ~ 384.00MHz	dB	45.0	50.0	—
384.00MHz ~ 397.00MHz	dB	40.0	45.0	—
397.00MHz ~ 402.55MHz	dB	15.0	20.0	—
404.55MHz ~ 413.00MHz	dB	10.0	15.0	—
413.00MHz ~ 520.00MHz	dB	35.0	40.0	—
520.00MHz ~ 1000.00MHz	dB	45.0	50.0	—
Temperature Coefficient of Frequency	Ppm/K <sup>2</sup>	—	-0.03	—
External Impedance Match				
Series Inductance L	nH	—	33	—
Shunt Capacitance C	pF	—	5.6	—



3. Frequency Characteristics

