



SAW Components

Data Sheet

CQTSF315M00.01

Customer's Approval Certificate	
Complies with Directive 2002/95/EC (RoHS)	
Please return this Page Via email as a certification of Your approval	
Checked & Approval by:	Date:

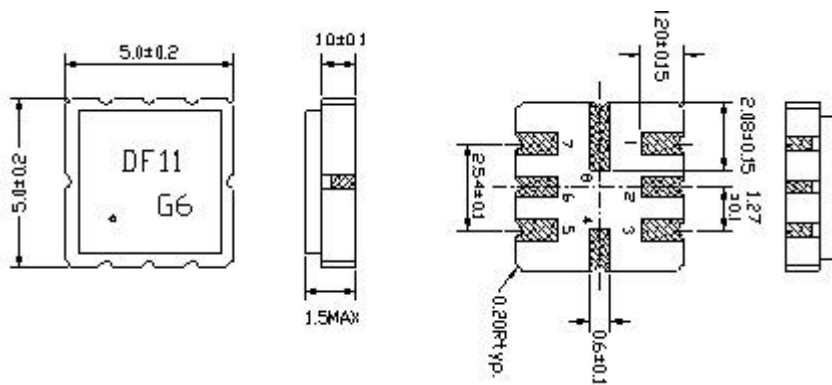
Hangzhou Freq-control Electronics Technology Co.,Ltd.

TEL:0086-571-85803723

FAX:0086-571-85803724

sales@@csimc-freqcontrol.com

1. Package Dimension S51(5.0x5.0)



Pin No.	Function
Pin 1	Input
Pin 2	Input Ground
Pin 5	Output
Pin 6	Output Ground
Pin 4,8	Case Ground
Pin 3,7	Ground

2. Performance

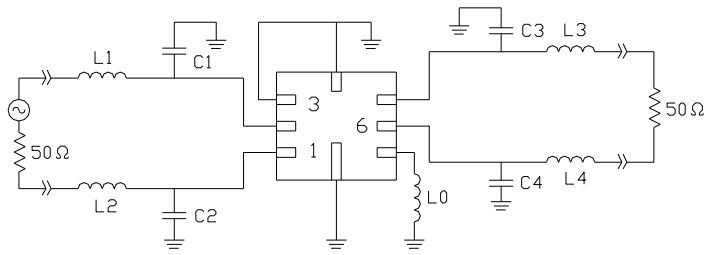
2.1 Maximum Rating

Item	Value
Operation Temperature Range	-45°C to +125°C
Storage Temperature Range	-45°C to +125°C
DC Permissive Voltage	0V DC max.
Maximum Input Power	0 dBm

2.2 Electronic Characteristics

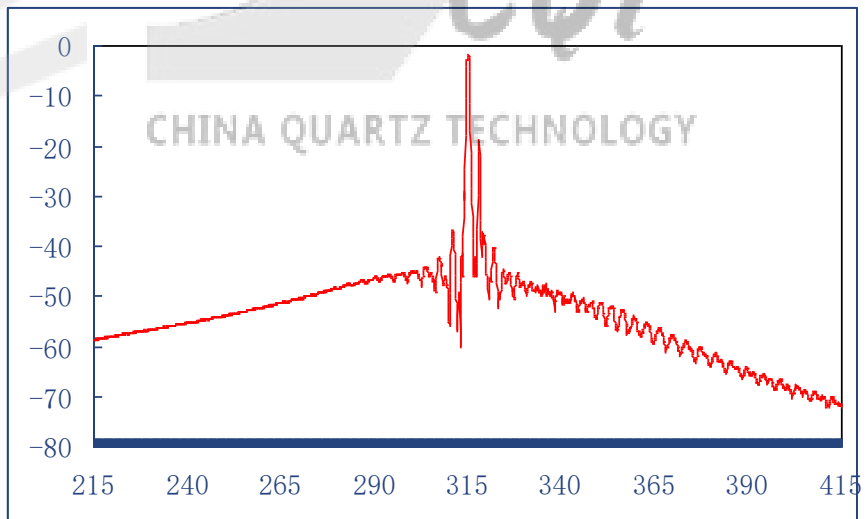
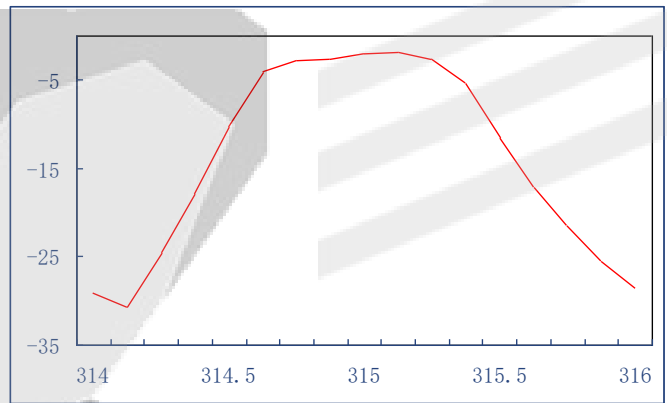
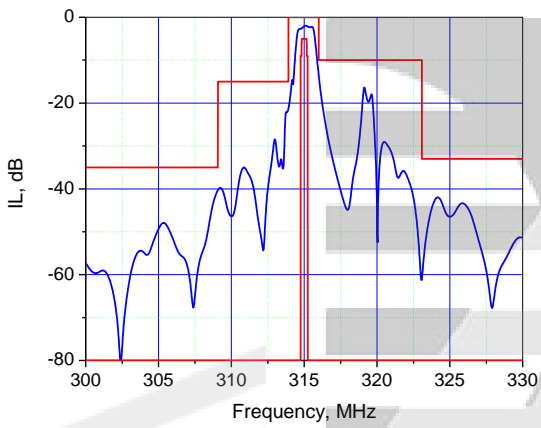
Item	Frequency (MHz)	Specification
Center Frequency (fo)	315.0	
Insertion Loss	314.80 ~ 315.20	5.0dB Max.
Passband Width	314.75 ~ 315.24	3.0dB Max.
	314.69 ~ 315.30	6.0dB Max.
Relative Attenuation	10.0 ~ 270.0	45 dB Min.
	270.0 ~ 309.0	35 dB Min.
	309.0 ~ 314.0	15 dB Min.
	316.0 ~ 335.0	10 dB Min.
	335.0 ~ 400.0	35 dB Min.
	400.0 ~ 1000.0	45 dB Min.
Impedance within the pass band Input: ZIN = RIN // CIN Output: ZOUT = ROUT // COUT		950 // 3.18Ω // pF 960 // 3.14Ω // pF
Temperature coefficient of		0.03 Ppm/K2

3. Test Circuit



$C = 5.6 \text{ pF}$
 $L = 82 \text{ nH}$

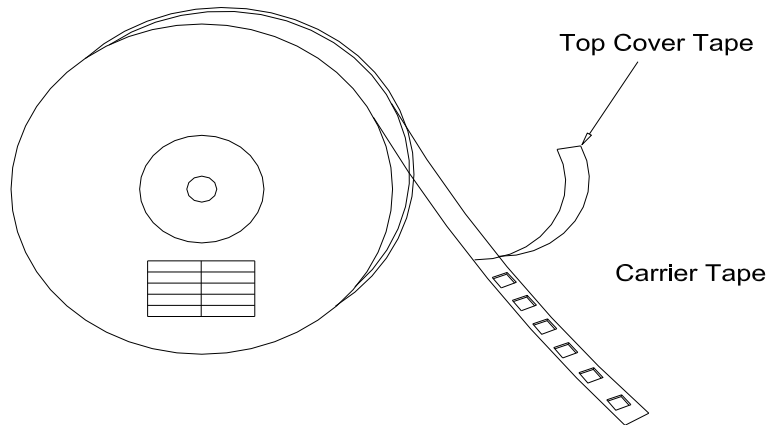
4. Frequency Characteristics



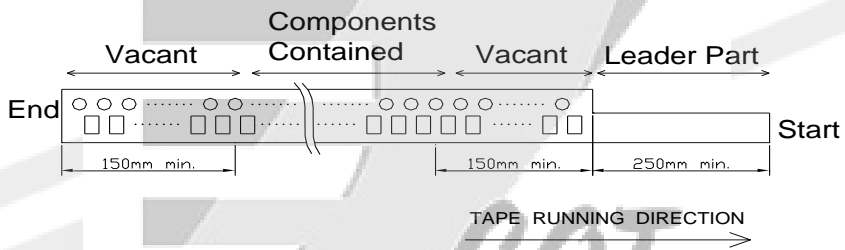
5. Packing Information

Reel specifications:

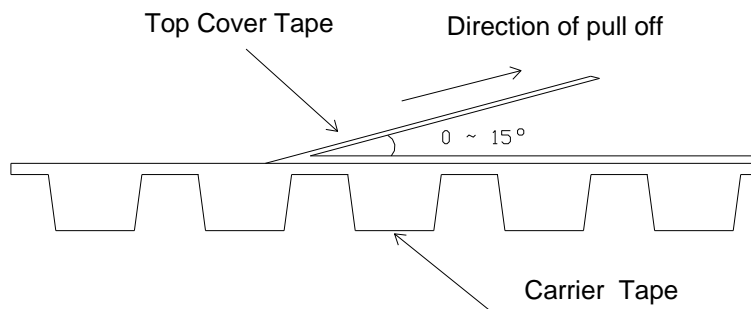
- (1) The tape shall be wound around the reel in the direction shown below.



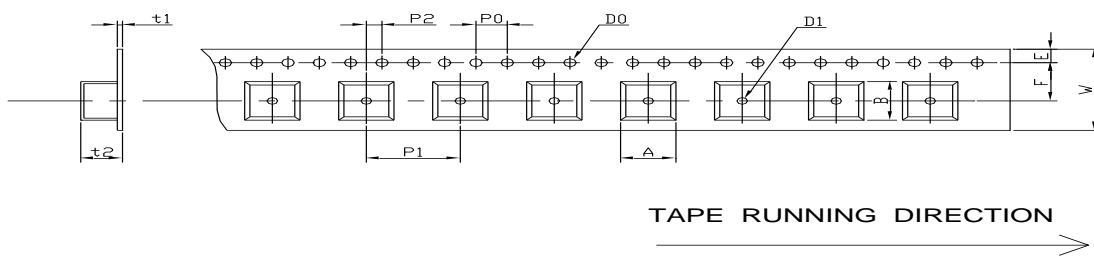
- 2) Leader part and vacant position specifications.



6. Tape Specifications



[Figure 1] Carrier Tape Dimensions



[Unit: mm]

W	F	E	P0	P1	P2	D0	D1	t1	t2	A	B
12.0	5.5	1.75	4.0	8.0	2.0	Φ 1.5	Φ 1.5	0.31	1.95	4.1	4.1
±0.3	±0.1	±0.1	±0.2	±0.1	±0.2	±0.1	±0.25	max.	max.	max.	max.

CQT
CHINA QUARTZ TECHNOLOGY